

Snowmobile & ATV Drive Belts Troubleshooting Guide



Uneven belt wear on one side only

Cause

Treatment

Pulley misalignment	Align pulley(s)
Engine mount(s) loose	Replace or tighten engine mount
Rough or scratched pulley surface	Repair or replace pulley(s)

Always Replace with Dayco's HP & HPX Belts



Belt worn excessively in Top Width

Excessive slippage	Check drive pulley for smooth actuation
Rough or scratched pulley surface	Repair or replace pulley(s)
Considerable use, belt wearing out	Replace belt

Always Replace with Dayco's HP & HPX Belts



Belt edge cord broken

Pulley Misalignment	Align pulley(s)
Improper belt Installation	See Operator's Manual
Engagement speed too high	Reduce engagement speed

Always Replace with Dayco's HP & HPX Belts



Flex cracks between cogs

Considerable use, belt wearing out	Replace belt
Bent pulley causes belt flutter	Repair or replace pulley(s)
Extremely low temperature	Warm up belt slowly

Always Replace with Dayco's HP & HPX Belts



Sheared cogs, compression section fractured or torn

Improper belt installation	See Operator's Manual
Belt rubbing stationary object	Check drive components

Always Replace with Dayco's HP & HPX Belts



Concave top belt surface worn belt side

Excessive rideout on driver pulley	Repair or replace driver pulley
Drive misalignment	Align pulley(s)
Rough or scratched pulley(s) surface	Repair or replace pulleys(s)
Excessive slippage	Repair or replace driver pulley

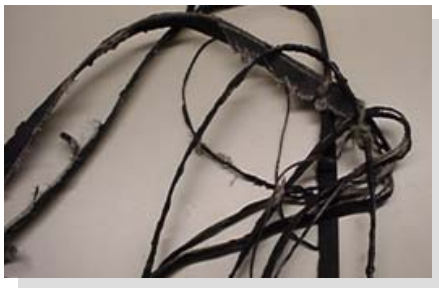
Snowmobile & ATV Drive Belts Troubleshooting Guide



Belt worn narrow in one section



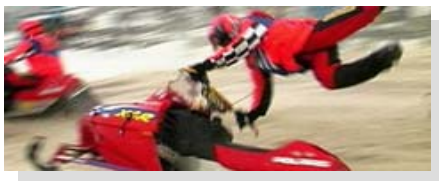
Belt flipover at high speed



Belt disintegration



Belt glazed excessively or belt has baked appearance



Belt too tight during engine idle



Broken Belt

Cause

Treatment

Converter not functioning properly	Repair or replace converter
Engine idle speed too high	Reduce engine RPM

Always Replace with Dayco's HP & HPX Belts

Pulley misalignment	Align pulley(s)
Excessive belt speed	Reduce engine RPM
Excessive ride-out on driver pulley	Repair or replace driver pulley
Incorrect belt length	See Operator's Manual

Always Replace with Dayco's HP & HPX Belts

Excessive belt speed	Reduce engine RPM at high speed
Sheave misalignment causing belt flip over	Align sheaves
Excessive slippage causing heat buildup	Inspect clutches

Always Replace with Dayco's HP & HPX Belts

Insufficient pressure on belt sides	Check driver pulley for smooth actuation
Excessive horsepower for belt & converter	Consult dealer
Excessive oil on pulley surfaces	Check bearing seals and clean pulley surfaces
Insufficient pre-load on drive spring	Consult Operator's Manual

Always Replace with Dayco's HP & HPX Belts

Idle speed too high	Reduce engine RPM
Incorrect belt or belt length	See Operator's Manual
Incorrect drive center distance	See manual – reduce center distance
Idler bearing seized	Replace bearing
Incorrect installation tension	See manual for correct tension

Always Replace with Dayco's HP & HPX Belts

Engagement RPM too high	Reduce engagement RPM
Belt hanging up on bottom of drive pulley	Belt too short - Replace